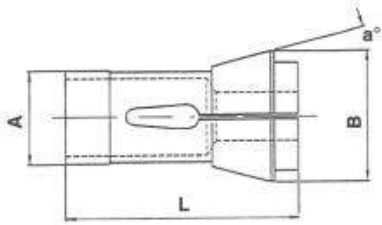




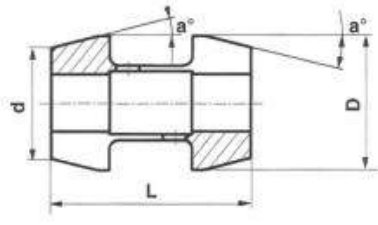
**MIRABELLI & FORNARO**

**CATALOGO**

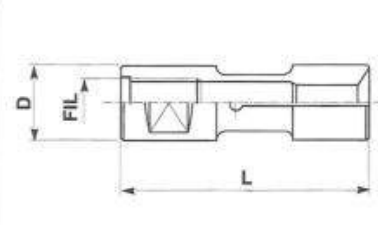
**FIGURE INDICATIVE PER ALCUNI TIPI DI PINZE  
PICTURES SHOWING SOME KIND OF COLLETS**



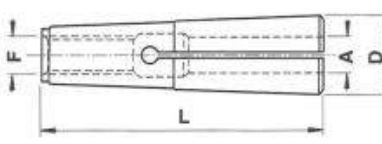
TIPO A Pag. 3



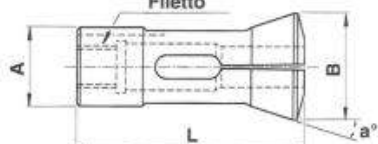
TIPO B Pag. 5



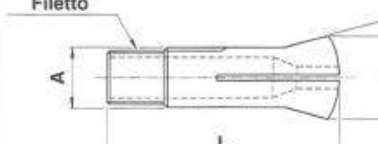
TIPO C Pag. 6



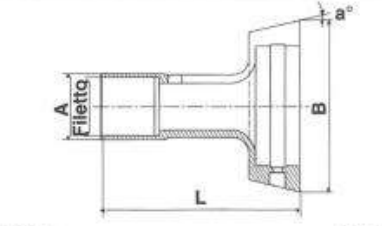
TIPO D Pag. 7



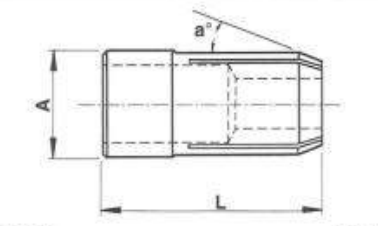
TIPO E Pag. 7



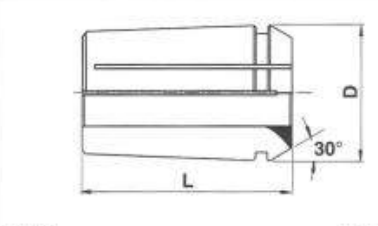
TIPO F Pag. 8



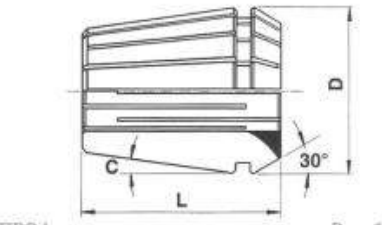
TIPO G Pag. 8



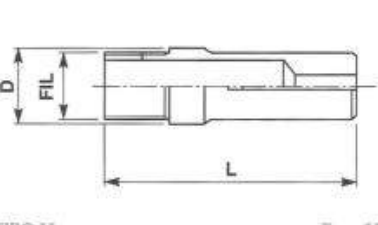
TIPO H Pag. 9



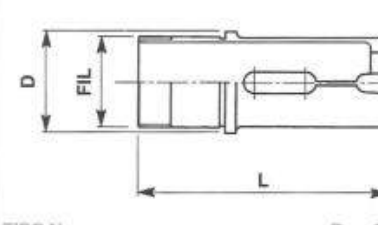
TIPO I Pag. 9



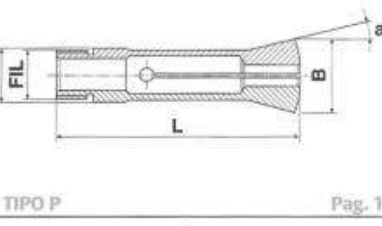
TIPO L Pag. 10



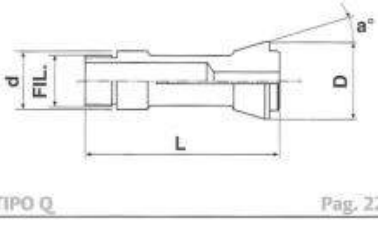
TIPO M Pag. 17



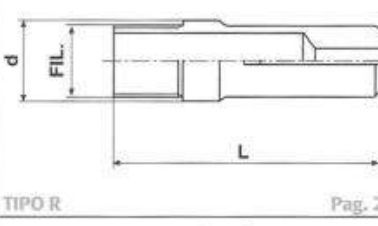
TIPO N Pag. 17



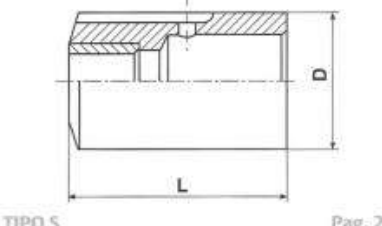
TIPO P Pag. 18



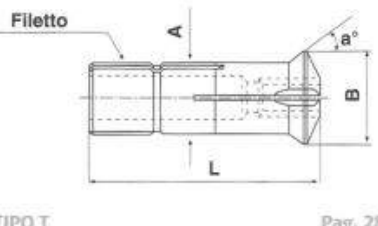
TIPO Q Pag. 22



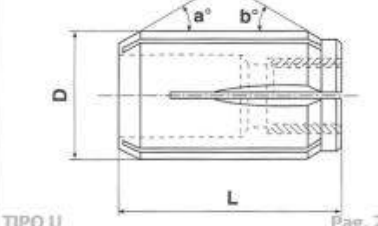
TIPO R Pag. 26



TIPO S Pag. 28



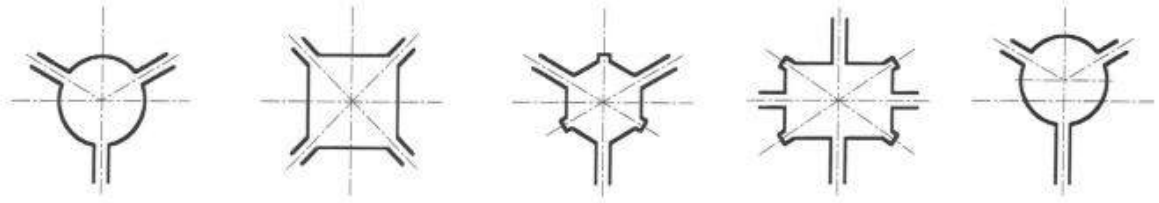
TIPO T Pag. 28



TIPO U Pag. 29

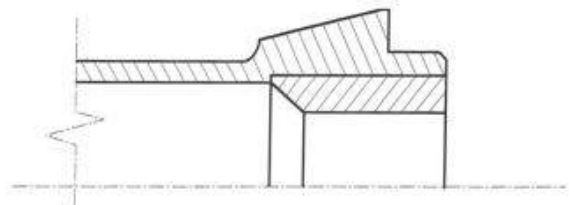
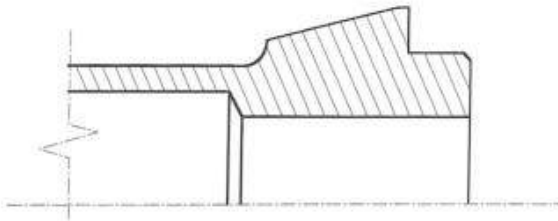


**Forma e tipo degli alesaggi**  
*Bore execution*



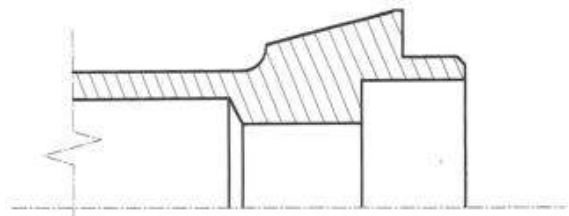
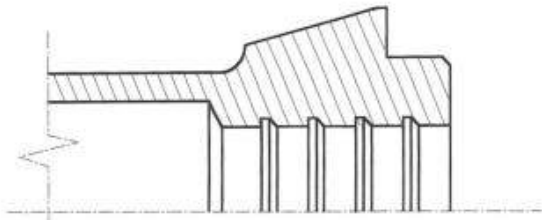
**Tipo liscio**  
*Smooth type*

**Con metallo duro**  
*With solid carbide*



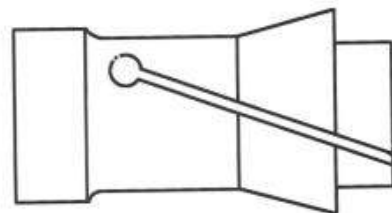
**Tipo rigato**  
*Grooved type*

**Tipo con battuta**  
*With counterbore type*



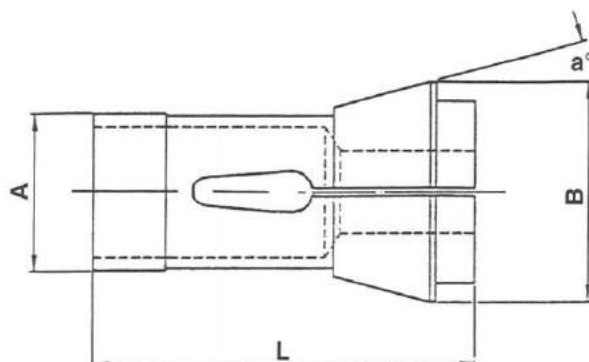
**Tipo quadrettato**  
*Serrated type*

**Tipo con tagli inclinati**  
*Non axial cuts type*






**MIRABELLI & FORNARO**

## TIPO A



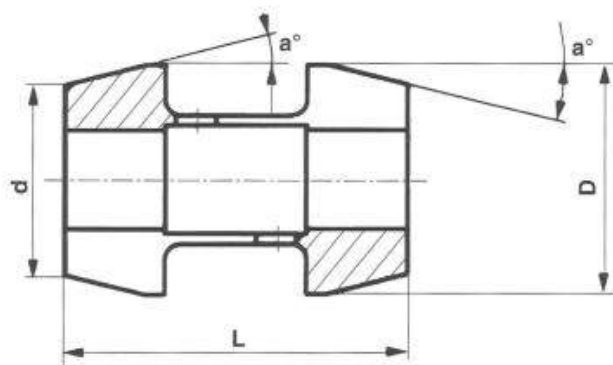
Serie	Art.	Art.	Art.	Nr. Einheits	A	B	L	a°
PZ	A100	—	—	100E	6	10	30	15°
PZ	A101	—	—	1020E	7	10,7	26	15°
PZ	ST004D	—	—	101E	8	12	42	16°
PZ	A102	—	—	103E	8	14	35	15°
PZ	A103	—	—	109E	10	15,5	47,5	20°
PZ	A104	—	—	110E	10	16	43	15°
PZ	ST07D	—	—	111E	10	16	46,5	20°
PZ	BP12D	—	—	—	12	14,5	21	16°
PZ	PMSA26D	—	—	—	12	17	27	20°
PZ	A105	—	—	—	12	18	64	16°
PZ	A106	—	—	116E	13	19	64	16°
PZ	BE10D	BE10E	BE10Q	117E	14	18	46	13°
PZ	A107	—	—	—	14	20	44	15°
PZ	BP15	—	—	—	15	17	17	16°
PZ	ST125D	ST125E	ST125Q	120E	15	21	64	16°
PZ	P7RD	—	—	121E	15	22	47	20°
PZ	A108	—	—	1212E	16	21	64	16°
PZ	P10HSD	P10HSE	P10HSQ	123E	16	22	55	15°
PZ	A109	—	—	125E	17,46	22,05	51	15°
PZ	A110	—	—	—	18	24	64	16°
PZ	BE12D	BE12E	—	127E	18	25	67	15°
PZ	IXON12D	IXON12E	IXON12Q	136E	20	26	54	15°
PZ	P10HSRD	P10HSRE	—	1299E	20	27,5	60	15°
PZ	T16D	T16E	—	138E	20	28	67	16°
PZ	BE16D	BE16E	—	139E	22	28	68	13°
PZ	TR15D	TR15E	TR15Q	140E	22	30	55	15°
PZ	P16D	P16E	—	—	22	32	66	16°
PZ	A111	—	—	141E	23,8	28,57	63,5	15°
PZ	A112	—	—	—	25	30	34	15°
PZ	A113	—	—	143E	25	31	54	15°
PZ	P20D	P20E	—	144E	25	34	65	15°
PZ	TO20D	TO20E	—	—	25	35	73,5	16°
PZ	ST205D	ST205E	ST205Q	145E	25	35	77	16°
PZ	BE20D	BE20E	—	146E	26	32	67	13°

								
Serie	Art.	Art.	Art.	Nr. Einheits	A	B	L	$\alpha^\circ$
PZ	A114	—	—	147E	27	38	72,7	15°
PZ	A115	—	—	—	27	38,5	73	16°
PZ	TR20D	TR20E	TR20Q	148E	28	38	70	15°
PZ	A116	—	—	—	30	38	65	15°
PZ	ST255D	ST255E	ST255Q	157E	30	42	80	16°
PZ	A117	—	—	—	32	40	65	15°
PZ	TO28D	TO28E	—	—	32	42	80	15°
PZ	TR25D	TR25E	TR25Q	161E	32	45	75	15°
PZ	A118	—	—	—	34	40	80	15°
PZ	A119	—	—	—	34	44	80	16°
PZ	A120	—	—	—	35	40	46	15° <sup>10</sup>
PZ	IX25D	IX25E	1X25Q	162E	35	43	70	15°
PZ	IX24D	IX24E	IX24Q	163E	35	48	80	15°
PZ	A121	—	—	—	36	46	80	15°
PZ	A122	—	—	—	36	48	90	15°
PZ	A123	—	—	—	37	47	92	16°
PZ	SA32D	SA32E	SA32Q	—	38	50	86	15°
PZ	A124	—	—	164E	38,1	49	107,5	15°
PZ	A125	—	—	—	38	50	100	15°
PZ	A126	—	—	164E	38,1	49,3	108	15°
PZ	A127	—	—	—	39	46	80	15°
PZ	TR36D	TR36E	—	171E	42	55	94	15°
PZ	A128	—	—	—	44,45	54,8	109	15°
PZ	TR42D	TR42E	TR42Q	173E	48	60	94	15°
PZ	A129	—	—	—	49	61	80	15°
PZ	BO46D	BO46E	—	—	52	63	92	15°
PZ	TA52D	—	—	177E	58	70	94	15°
PZ	A130	—	—	—	60	72	102	15°
PZ	TR60D	TR60E	TR60Q	185E	66	84	110	15°
PZ	A131	—	—	—	68	84	109	15°
PZ	A132	—	—	187E	72	90	142	15°
PZ	A133	—	—	—	73	89,5	120	15°
PZ	A134	—	—	—	80	98	115	15°
PZ	A135	—	—	—	82	100,3	160	15°
PZ	A136	—	—	188E	84	100	142	15°
PZ	A137	—	—	—	88	102	120	15°
PZ	A138	—	—	190E	88	106	115	15°
PZ	A139	—	—	193E	90	107	130	15°
PZ	A140	—	—	—	95	117	125	15°
PZ	A141	—	—	—	105	125	172	15°
PZ	A142	—	—	196E	112	138	120	15°



## Pinze di chiusura a doppio cono Double cone collets

TIPO B

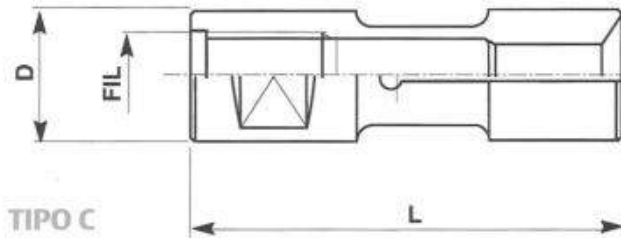


Serie	Art.	Art.	D	d	L	a°
DC	B200	—	19	14	36	20°
DC	B201	—	19	15	55	25°
DC	B202	—	25	18	60	25°
DC	B203	—	25,5	21	50	14°
DC	B204	—	26	18	55	25°
DC	B205	—	26	20	60	20°
DC	B206	—	30	24	60	20°
DC	B207	—	34	27	56	17°
DC	TR25DCD	TR25DCE	34,5	28	74	25°
DC	B208	—	35	27	85	17°
DC	B209	—	38	33	83	20°
DC	B210	—	40	29,8	75	20°
DC	B211	—	40	32	70	15°
DC	B212	—	40,5	33	75	25
DC	B213	—	42	37,5	82	17
DC	B214	—	43	35	68	14°
DC	B215	—	43	36	70	15°
DC	B216	—	48	43	90	20°
DC	B217	—	50	39	80	20°
DC	B218	—	58	53	90	20°
DC	TR45DCD	TR45DCE	61	49	80	17°
DC	B219	—	69,5	58	100	18°
DC	B220	—	70	60	80	16°
DC	B221	—	71,6	60	100	18°
DC	B222	—	81	70	90	17°
DC	B223	—	88	76	130	18°
DC	B224	—	91	80	100	17°
DC	B225	—	108	95	105	17°
DC	B226	—	113	102	130	18°



MIRABELLI & FORNARO

## Pinze per caricatore Feed fingers



TIPO C

Fig. 1

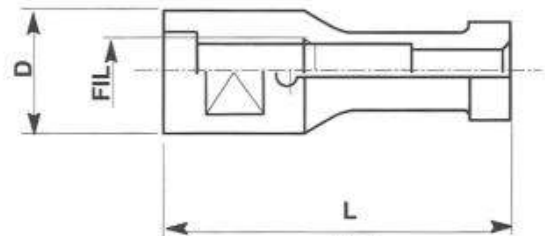


Fig. 2

Serie	Art.	Nr. Einheits	D	L	Filetto	Fig.	Tipo caricatore
PZ	IE7	2001E	7,5	40	M5x0,5	2	IEMCA 7
PZ	IE1040	2045E	10	40	M6x0,75	2	IEMCA 10
PZ	IE1050	—	10	50	M6x0,75	1	CUCCHI 10
PZ	IE1242	2061E	12	42	M7x0,75	2	IEMCA 12
PZ	IE1252	—	12	52	M7x0,75	1	CUCCHI 12
PZ	C300	—	14	42	M8x1	2	IEMCA 14
PZ	C301	—	14	52	M8x1	1	CUCCHI 14
PZ	IE15	2101E	15	42	M8x1	2	IEMCA 15
PZ	CU15	—	15	52	M8x1	1	CUCCHI 15
PZ	IE16	—	16	42	M8x1	2	IEMCA 16
PZ	C302	—	16	52	M8x1	1	CUCCHI 16
PZ	IE20	2197E	20	59	M10x1	1-2	CUCCHI 20 - IEMCA 20
PZ	C303	—	20	64	SPINA	—	TRAUB 25
PZ	IE25	2289E	25	59	M10x1	2	IEMCA 25
PZ	CU25	—	25	60	M14x1	1	CUCCHI 25
PZ	IE30	—	30	59	M10x1	2	IEMCA 30
PZ	CU30	—	30	65	M18x1,5	1	CUCCHI 30
PZ	CU40	—	40	70	M25x1,5	1-2	CUCCHI 40 - IEMCA 40
PZ	CU46	—	46	72	M25x1,5	1-2	CUCCHI 46 - IEMCA 46
PZ	IE55	—	55	80	M25x1,5	2	IEMCA 55
PZ	IE60	—	60	80	M25x1,5	2	IEMCA 60
PZ	IE70	—	70	79	M25x1,5	2	IEMCA 70

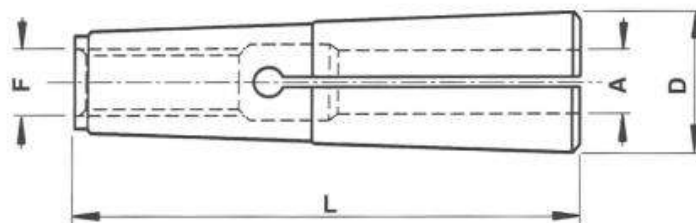


MIRABELLI & FORNARO

UNI 4702

## Pinze porta utensili Tool collets

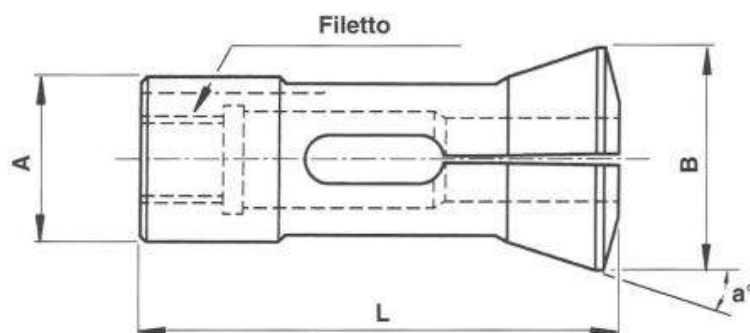
### TIPO D



Serie	Art.	Tipo	F	L	D	A	Nr. Einheits
PZ	PPSA26	CM. 2	M10	69	18,0	1,0÷14	503E
PZ	PPSA45	CM. 3	M12	85,5	24,1	2,0÷18	536E
PZ	D400	CM. 4	M16	108,5	31,6	4,0÷25	539E

## Pinza tirata con filetto interno Drawback collet with inside thread

### TIPO E



Serie	Art.	A	B	L	a°	Filetto
PZ	E500	45	58	107	15°	M39x1,5


**MIRABELLI & FORNARO**



**Pinze tirate con filetto esterno**  
**Drawback collets with outside thread**

DIN 6341

**TIPO F**

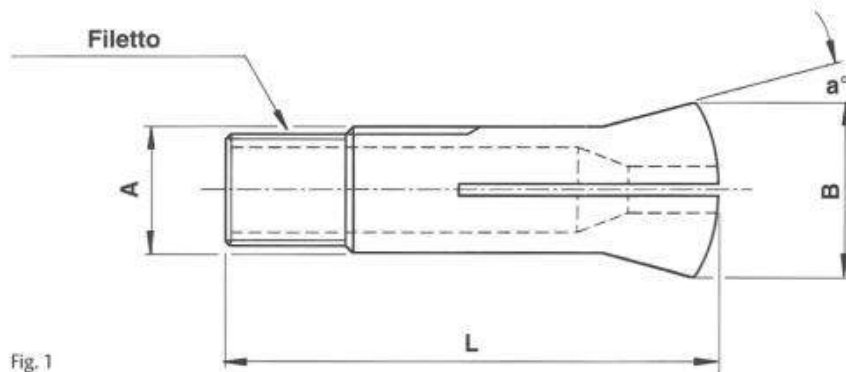


Fig. 1

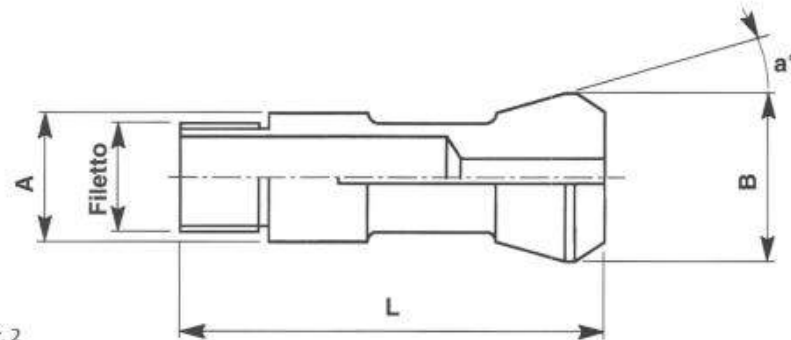
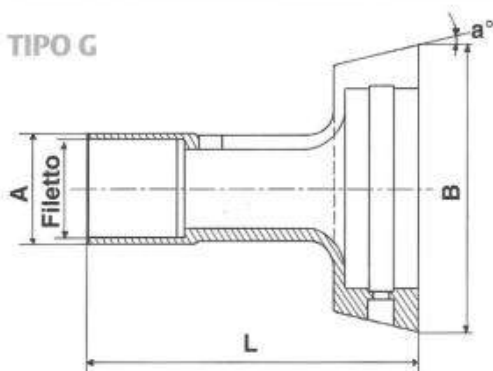


Fig. 2

Serie	Art.	Nr. Einheits	A	B	L	a°	Filetto	Fig.
PZ	PPTR1525	324E	15	21,5	55	20°	M13x1	1
PZ	PPTR4260	363E	25	33,5	88	16°	M23x1	1
PZ	F600	—	30	40	96	20°	M25X1,25	2
PZ	F601	—	35	44	103	20°	M32X1,50	2
PZ	F602	—	40	55	117	20°	M35x1,50-45/5°	2

**Pinze 105 per mandrino Ø 130**  
**Collets 105 for spindle Ø 130**

**TIPO G**



Serie	Art.	A	B	L	a°	Filetto
PZ	BIHR105	42	108	135	12°	M36x1,25
PZ	BIHR105/70	41,8	150	135	12° <sup>30'</sup>	M36x1,25

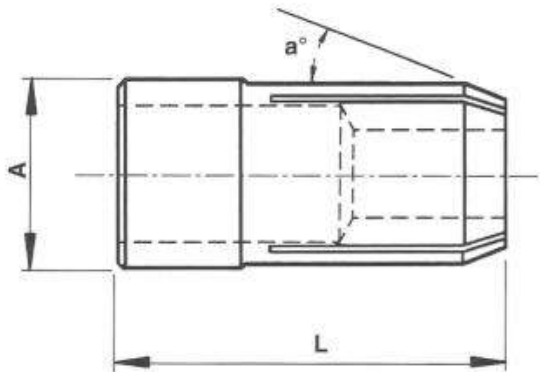
Tasselli pinza a richiesta  
 Collets insert on request



**MIRABELLI & FORNARO**

## Pinze in acciaio per rotanti Steel collets for rotaries

TIPO H



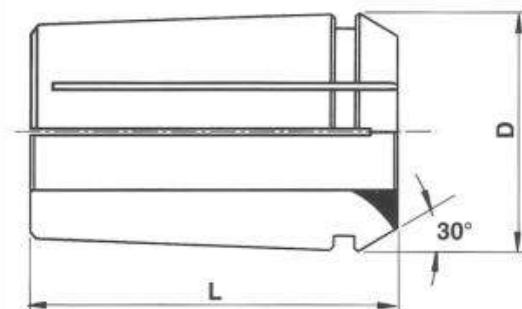
Serie	Art.	A	B	a°
PZ	R16	16	35	19°
PZ	H700	28	45	19°
PZ	R32	32	45	19°
PZ	H701	34	48	30°

DIN 6388/B

Pinze DIN 6388/B  
DIN 6388/B collets

STANDARD  
PRECISION

TIPO I

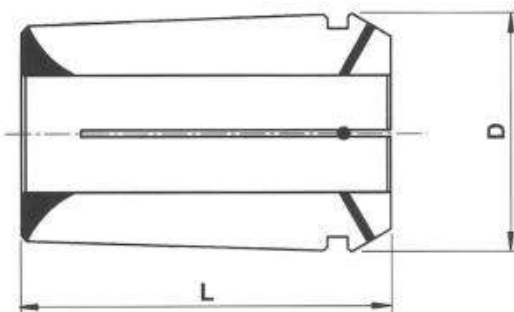


Serie	Tipo	Art.	Capacità	D	L	Progressione	Nr. Einheits
PZ	EOG 12	1800	1÷12	19,80	34	mm 0,5	470E
PZ	EOG 16	1801	2÷16	25,50	40	mm 0,5	415E
PZ	EOG 20	1802	2÷20	29,80	45	mm 0,5	4541E
PZ	EOG 25	1803	2÷25	35,05	52	mm 0,5	462E
PZ	EOG 32	1804	3÷32	43,70	60	mm 0,5	467E

RF

Pinze DIN 6388 a tenuta stagna  
Watertight DIN 6388 collets

STANDARD  
PRECISION



Serie	Tipo	Art.	Capacità	D	L	Progressione
PZ	EOG 16 RF	1801 RF	4÷16	25,50	40	mm 0,5
PZ	EOG 25 RF	1803 RF	4÷25	35,05	52	mm 0,5
PZ	EOG 32 RF	1804 RF	8÷32	43,70	60	mm 0,5

Pinze con inserti in neoprene e passaggio centrale del refrigerante.  
Collets with neoprene insertions and cociant only through the collet hole. Those collets clamp only nominal diameter

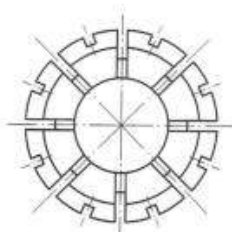


MIRABELLI & FORNARO

STANDARD  
PRECISION

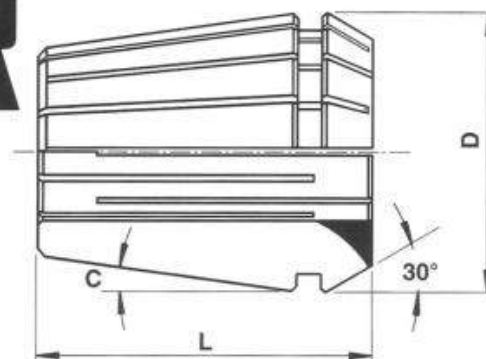
Pinze ER - DIN 6499/B  
DIN 6499/B - ER collets

DIN 6499/B



**ER**

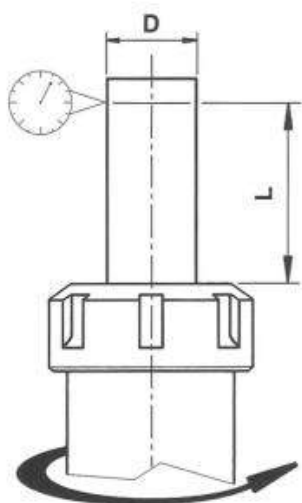
TIPO L



Serie	Art.	Capacità	Espansione	Progressione	D	L	C	Nr. Einheits
ER 8	L900	1÷5	mm 0,5	0,5	8,5	13,5	8°	4004E
ER 11	L901	1÷7	mm 0,5	0,5	11,5	18,0	8°	4008E
ER 12	L902	1÷3	mm 0,5	0,5	12,0	19,5	8°	424E
		4÷7	mm 1,0					
ER 16	L903	1÷3	mm 0,5	0,5	17,0	27,5	8°	426E
		4÷10	mm 1,0					
ER 20	L904	1÷3	mm 0,5	0,5	21,0	31,5	8°	428E
		4÷13	mm 1,0					
ER 25	L905	1÷3	mm 0,5	0,5	26,0	34,0	8°	430E
		4÷16	mm 1,0					
ER 32	L906	2÷20	mm 1,0	0,5	33,0	40,0	8°	470E
ER 40	L907	3÷30	mm 1,0	0,5	41,0	46,0	8°	472E
ER 50	L908	6÷34	mm 2,0	1,0	52,0	60,0	8°	477E
ER60	L910	10÷40	mm 2,0	2,0	61,0	60,0	10°	494E

Concentricità delle pinze ER  
ER collets runout accuracy

DIN 6499



		<b>ER</b>	<b>HP</b>	<b>UP</b>
D	L	Standard precision	High precision	Ultra precision
1,0÷1,5	6	≤ 0,015 mm	≤ 0,008 mm	≤ 0,005 mm
1,6÷2,9	10			
3,0÷5,9	16			
6,0÷9,9	25			
10,0÷17,9	40	≤ 0,020 mm	≤ 0,008 mm	≤ 0,005 mm
18,0÷26,0	50			

Il diametro "D" riferito alla spina di collaudo corrisponde  
al diametro nominale della pinza  
Testing pin "D" diameter corresponds to the collet nominal diameter



MIRABELLI & FORNARO

**ER****Contenitore e cassette vuoti per pinze ER**  
*Empty cases for ER collets*CONTENITORE  
VUOTOCASSETTA  
VUOTA

Serie pinza ER	Nr. sedi	Articolo	Articolo
ER 8	16	L911	L919
ER 11	16	L912	L920
ER 12	16	L913	L921
ER 16	16	L914	L922
ER 20	16	L915	L923
ER 25	20	L916	L924
ER 32	20	L917	L925
ER 40	28	L918	L926

**ER****Serie ridotta di pinze ER**  
*ER collets reduced set*KIT IN  
CONTENITOREKIT IN  
CASSETTA

Serie kit	Diametri	Nr. pinze	Articolo	Articolo
ER 8 ridotto	Ø 1-2-3-4-5	5	L927	L934
ER 11 ridotto	Ø 1-2-3-4-5-6-7	7	L928	L935
ER 16 ridotto	Ø 2-4-6-8-10	5	L929	L936
ER 20 ridotto	Ø 2-4-6-8-10-12	6	L930	L937
ER 25 ridotto	Ø 4-6-8-10-12-16	6	L931	L938
ER 32 ridotto	Ø 4-6-8-10-12-16-20	7	L932	L939
ER 40 ridotto	Ø 4-6-8-10-12-16-20-25	8	L933	L940

**ER****Serie completa di pinze ER**  
*ER collets complete set*KIT IN  
CONTENITOREKIT IN  
CASSETTA

Serie kit	Diametri	Nr. pinze	Articolo	Articolo
ER 8 completo	da Ø 1 a Ø 5 - Progressione 0,5	9	L941	L948
ER 11 completo	da Ø 1 a Ø 7 - Progressione 0,5	13	L942	L949
ER 16 completo	da Ø 1 a Ø 10 - Progressione 1	10	L943	L950
ER 20 completo	da Ø 2 a Ø 13 - Progressione 1	12	L944	L951
ER 25 completo	da Ø 2 a Ø 16 - Progressione 1	15	L945	L952
ER 32 completo	da Ø 3 a Ø 20 - Progressione 1	18	L946	L953
ER 40 completo	da Ø 4 a Ø 26 - Progressione 1	23	L947	L954

A richiesta è possibile completare tutte le cassette di corredo con il portapinza e la chiave di Vostro interesse.

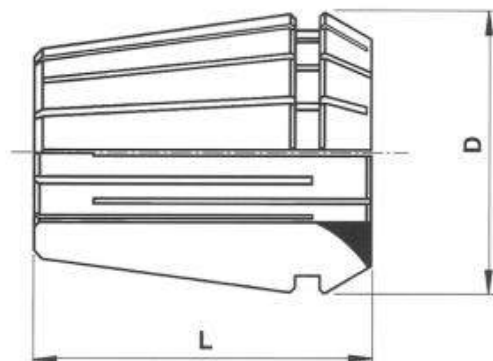
**MIRABELLI & FORNARO**

HIGH  
PRECISION

## Pinze ER di alta precisione High precision ER collets

DIN 6499/B

# ER HP



Serie	Art.	Capacità	D	L
ER 8 HP	L900 HP	1÷5	8,5	13,5
ER 11 HP	L901 HP	1÷7	11,5	18,0
ER 12 HP	L902 HP	1÷7	12,0	19,5
ER 16 HP	L903 HP	1÷10	17,0	27,5
ER 20 HP	L904 HP	1÷13	21,0	31,5
ER 25 HP	L905 HP	1÷16	26,0	34,0
ER 32 HP	L906 HP	2÷20	33,0	40,0
ER 40 HP	L907 HP	4÷26	41,0	46,0

Le pinze ER-HP differiscono dalle normali pinze ER di pagine 11 per la maggiore precisione  
ER-HP collets are different from ER standard collets on page 10 because of a higher accuracy

# ER HP

### Serie ridotta di pinze ER alta precisione High precision ER collets reduced set

KIT IN  
CONTENITORE



Serie kit	Diametri	Nr. pinze	Articolo	Articolo
ER 8 HP - ridotto	Ø 1-2-3-4-5	5	L955	L962
ER 11 HP - ridotto	Ø 1-2-3-4-5-6-7	7	L956	L963
ER 16 HP - ridotto	Ø 2-4-6-8-10	5	L957	L964
ER 20 HP - ridotto	Ø 2-4-6-8-10-12	6	L958	L965
ER 25 HP - ridotto	Ø 4-6-8-10-12-16	6	L959	L966
ER 32 HP - ridotto	Ø 4-6-8-10-12-16-20	7	L960	L967
ER 40 HP - ridotto	Ø 4-6-8-10-12-16-20-25	8	L961	L968

# ER HP

### Serie completa di pinze ER alta precisione High precision ER collets complete set

KIT IN  
CONTENITORE



Serie kit	Diametri	Nr. pinze	Articolo	Articolo
ER 8 HP - completo	da Ø 1 a Ø 5 - Progressione 0,5	9	L969	L976
ER 11 HP - completo	da Ø 1 a Ø 7 - Progressione 0,5	13	L970	L977
ER 16 HP - completo	da Ø 1 a Ø 10 - Progressione 1	10	L971	L978
ER 20 HP - completo	da Ø 2 a Ø 13 - Progressione 1	12	L972	L979
ER 25 HP - completo	da Ø 2 a Ø 16 - Progressione 1	15	L973	L980
ER 32 HP - completo	da Ø 3 a Ø 20 - Progressione 1	18	L974	L981
ER 40 HP - completo	da Ø 4 a Ø 26 - Progressione 1	23	L975	L982

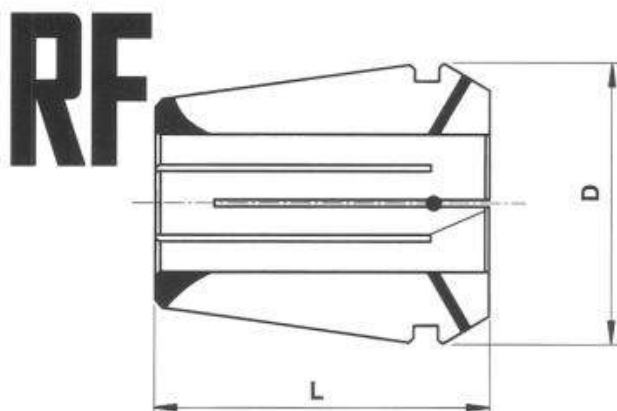
A richiesta è possibile completare tutte le cassette di corredo con il portapinza e la chiave di Vostro interesse.



MIRABELLI & FORNARO

DIN 6499/A

## Pinze ER a tenuta stagna Watertight ER collets

STANDARD  
PRECISION

Serie	Art.	D	L	Capacità	Progressione
ER 16 RF	L903 RF	17	27,5	3÷10	0,5
ER 20 RF	L904 RF	21	31,5	3÷13	0,5
ER 25 RF	L905 RF	26	34,0	3÷16	0,5
ER 32 RF	L906 RF	33	40,0	3÷20	0,5
ER 40 RF	L907 RF	41	46,0	4÷26	0,5

Pinze con inserti in neoprene e passaggio centrale del refrigerante. Bloccano solo il diametro nominale.  
Collets with neoprene insertions and coolant only through the collet hole.  
Those collets clamp only nominal diameter.

### RF Serie ridotta di pinze ER a tenuta stagna Watertight ER collets reduced set

KIT IN  
CONTENITOREKIT IN  
CASSETTA

Serie kit	Diametri	Nr. pinze	Articolo	Articolo
ER 16 RF - ridotto	Ø 4-6-8-10	4	L986	L991
ER 20 RF - ridotto	Ø 4-6-8-10-12	5	L987	L992
ER 25 RF - ridotto	Ø 4-6-8-10-12-16	6	L988	L993
ER 32 RF - ridotto	Ø 4-6-8-10-12-16-20	7	L989	L994
ER 40 RF - ridotto	Ø 4-6-8-10-12-16-20-25	8	L990	L995

### RF Serie completa di pinze ER a tenuta stagna Watertight ER collets complete set

KIT IN  
CONTENITOREKIT IN  
CASSETTA

Serie kit	Diametri	Nr. pinze	Articolo	Articolo
ER 16 RF - completo	da Ø 3 a Ø 10 - Progressione 1	8	L996	L1001
ER 20 RF - completo	da Ø 3 a Ø 13 - Progressione 1	11	L997	L1002
ER 25 RF - completo	da Ø 3 a Ø 16 - Progressione 1	14	L998	L1003
ER 32 RF - completo	da Ø 3 a Ø 20 - Progressione 1	18	L999	L1004
ER 40 RF - completo	da Ø 4 a Ø 26 - Progressione 1	23	L1000	L1005

A richiesta è possibile completare tutte le cassette di corredo con il portapinza e la chiave di Vostro interesse.



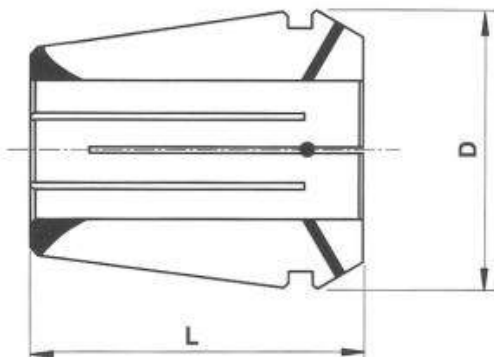
MIRABELLI &amp; FORNARO

ULTRA  
PRECISION

## Pinze ER a tenuta stagna di ultra precisione Ultra precision watertight ER collets

DIN 6499/A

**RF  
UP**



0,005 mm	Serie	Art.	D	L	Capacità
	ER 16 RF-UP	L903 UP	17	27,5	3÷10
	ER 20 RF-UP	L904 UP	21	31,5	3÷13
	ER 25 RF-UP	L905 UP	26	34,0	3÷16
	ER 32 RF-UP	L906 UP	33	40,0	3÷20
	ER 40 RF-UP	L907 UP	41	46,0	4÷26

Pinze con le medesime caratteristiche delle RF ma di altissima precisione: concentricità 0,005 mm. Bloccano solo il diametro nominale.  
Collets with the same characteristics of RF type but with an ultra precision: 0,005 runout accuracy. Those collets clamp only nominal diameter

**RF  
UP**

### Serie ridotta di pinze ER-UP a tenuta stagna Watertight ER-UP collets reduced set

KIT IN  
CONTENITORE



KIT IN  
CASSETTA



Serie kit	Diametri	Nr. pinze	Articolo	Articolo
ER 16 UP - ridotto	Ø 4-6-8-10	4	L1006	L1011
ER 20 UP - ridotto	Ø 4-6-8-10-12	5	L1007	L1012
ER 25 UP - ridotto	Ø 4-6-8-10-12-16	6	L1008	L1013
ER 32 UP - ridotto	Ø 4-6-8-10-12-16-20	7	L1009	L1014
ER 40 UP - ridotto	Ø 4-6-8-10-12-16-20-25	8	L1010	L1015

**ER  
HP**

### Serie completa di pinze ER-UP a tenuta stagna Watertight ER-UP collets complete set

KIT IN  
CONTENITORE



KIT IN  
CASSETTA



Serie kit	Diametri	Nr. pinze	Articolo	Articolo
ER 16 UP - completo	da Ø 3 a Ø 10 - Progressione 1	8	L1016	L1021
ER 20 UP - completo	da Ø 3 a Ø 13 - Progressione 1	11	L1017	L1022
ER 25 UP - completo	da Ø 3 a Ø 16 - Progressione 1	14	L1018	L1023
ER 32 UP - completo	da Ø 3 a Ø 20 - Progressione 1	18	L1019	L1024
ER 40 UP - completo	da Ø 4 a Ø 26 - Progressione 1	23	L1020	L1025

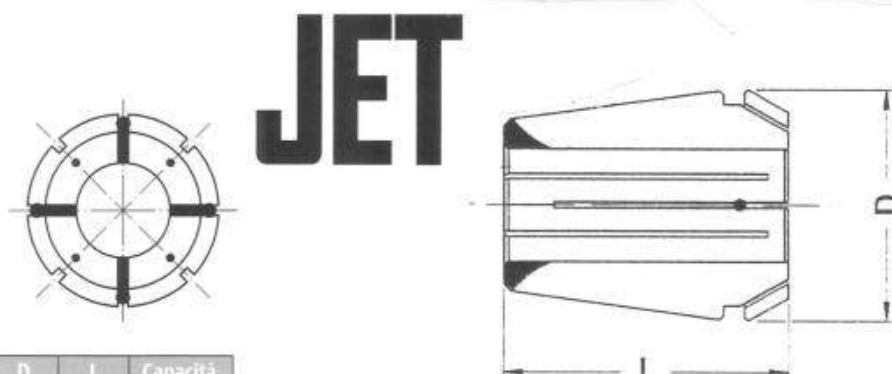
A richiesta è possibile completare tutte le cassette di corredo con il portapinza e la chiave di Vostro interesse.



MIRABELLI & FORNARO

DIN 6499/A

## Pinze ER con fori di lubrificazione ER collets with coolant holes

STANDARD  
PRECISION

Serie	Art.	D	L	Capacità
ER 16 JET	L903 JET	17	27,5	3÷7
ER 20 JET	L904 JET	21	31,5	3÷9
ER 25 JET	L905 JET	26	34,0	3÷14
ER 32 JET	L906 JET	33	40,0	3÷20
ER 40 JET	L907 JET	41	46,0	4÷26

Pinze con inserti in neoprene. Il refrigerante viene convogliato sui taglienti dell'utensile mediante i fori inclinati.  
Per garantire la precisione le pinze JET stringono solo il diametro nominale.  
Collets with neoprene insertions. Coolant is carried towards the edges of the tool. To grant precision JET collets clamp nominal diameter only.

**JET**

### Serie ridotta di pinze ER-JET ER-JET collets reduced set

KIT IN  
CONTENITOREKIT IN  
CASSETTA

Serie kit	Diametri	Nr. pinze	Articolo	Articolo
ER 25 JET - ridotto	Ø 4-6-8-10-12	5	L1026	L1029
ER 32 JET - ridotto	Ø 4-6-8-10-12-16-20	7	L1027	L1030
ER 40 JET - ridotto	Ø 4-6-8-10-12-16-20-25	8	L1028	L1031

**JET**

### Serie completa di pinze ER-JET ER-JET collets complete set

KIT IN  
CONTENITOREKIT IN  
CASSETTA

Serie kit	Diametri	Nr. pinze	Articolo	Articolo
ER 16 JET - completo	da Ø 3 a Ø 7 - Progressione 1	5	L1032	L1037
ER 20 JET - completo	da Ø 3 a Ø 9 - Progressione 1	7	L1033	L1038
ER 25 JET - completo	da Ø 3 a Ø 14 - Progressione 1	12	L1034	L1039
ER 32 JET - completo	da Ø 3 a Ø 20 - Progressione 1	18	L1035	L1040
ER 40 JET - completo	da Ø 4 a Ø 26 - Progressione 1	23	L1036	L1041

A richiesta è possibile completare tutte le cassette di corredo con il portapinza e la chiave di Vostro interesse.

**MIRABELLI & FORNARO**

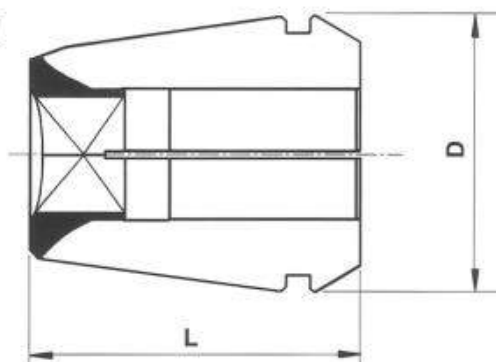


STANDARD  
PRECISION

## Pinze ER con quadro per maschiatura ER tapping collets with square

DIN 6499/A

# MF



Serie	Art.	D	L	Capacità
ER 16 con Quadro	L903 MF	17	27,5	da Ø 3,5 a Ø 8,0
ER 20 con Quadro	L904 MF	21	31,5	da Ø 3,5 a Ø 10,0
ER 25 con Quadro	L905 MF	26	34,0	da Ø 3,5 a Ø 12,0
ER 32 con Quadro	L906 MF	33	40,0	da Ø 4,0 a Ø 16,0
ER 40 con Quadro	L907 MF	41	46,0	da Ø 6,0 a Ø 20,0

Il quadro di trascinamento per il maschio  
è ricavato sul fondo della pinza.  
*Top drag square got out on the bottom of the collet.*

# MF

## Serie ridotta di pinze ER-MF ER-MF collets reduced set

KIT IN  
CONTENITORE



KIT IN  
CASSETTA



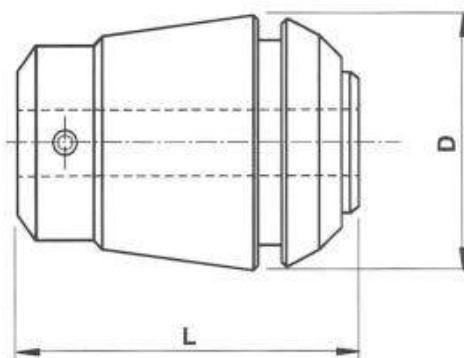
Serie kit	Diametri	Nr. pinze	Articolo	Articolo
ER 16 MF - ridotto	Ø 3,5-4,5-6-7	4	L1042	L1047
ER 20 MF - ridotto	Ø 3,5-4,5-6-7-8-9-10	7	L1043	L1048
ER 25 MF - ridotto	Ø 3,5-4,5-6-7-8-9-10-11-12	9	L1044	L1049
ER 32 MF - ridotto	Ø 4,5-6-7-8-9-10-11-12-14-16	10	L1045	L1050
ER 40 MF - ridotto	Ø 6-7-8-9-10-11-12-14-16-18-20	11	L1046	L1051

STANDARD  
PRECISION

## Pinze ER - Compensate a trazione ER collets - Compensation with traction

DIN 6499

# AM



Serie	Art.	D	L	Capacità
ER 16 Compensate	L903 AM	17	27,0	da Ø 2,0 a Ø 6,0
ER 20 Compensate	L904 AM	21	31,0	da Ø 2,5 a Ø 7,0
ER 25 Compensate	L905 AM	26	34,0	da Ø 2,5 a Ø 9,0
ER 32 Compensate	L906 AM	33	43,0	da Ø 4,5 a Ø 12,5
ER 40 Compensate	L907 AM	41	54,0	da Ø 6,0 a Ø 16,0

Il maschio viene bloccato con i grani situati sulla parte mobile.  
*Tap clamped by the grain placed on the mobile part.*

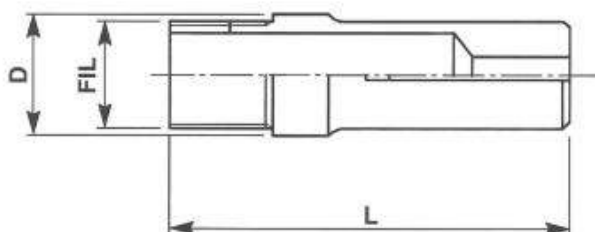


MIRABELLI & FORNARO

DIN 6344

## Contropinze di avanzamento Feed fingers

### TIPO M

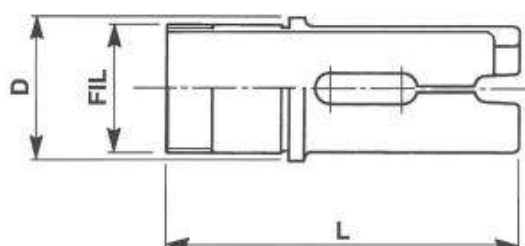


Serie	Art.	Art.	Art.	Nr. Einheits	D	L	Filetto
CP	IX12D	IX12E	IX12Q	207E	18	70	M16x1SX
CP	M1100	—	—	217E	21,5	70	M20x1SX
CP	IX18D	IX18E	IX18Q	220E	24	85	M22x1SX
CP	IX24D	IX24E	—	236E	30	95	M28x1SX
CP	IX25D	IX25E	IX25Q	237E	31	90	M29x1SX
CP	IX36D	IX36E	IX36Q	254E	42	116	M40x1,5SX
CP	M1101	—	—	—	46	123	M43x0,75SX
CP	M1102	—	—	260E	52	116	M50x1SX
CP	M1103	—	—	—	54	130	M51x1SX
CP	IX60D	IX60E	IX60Q	273E	60	140	M58x1SX

DIN 6344

## Contropinze di avanzamento esterno Outside feed fingers

### TIPO N



Serie	Art.	Art.	Art.	Nr. Einheits	D	L	Filetto
CP	IX24D	IX24RE	—	242E	42	120	M36x1,5
CP	IX36RD	IX36RE	—	259E	56	138	M50x1,5
CP	N1200	—	—	274E	68	138	M60x1,5
CP	N1201	—	—	—	70	158	M60x1,25
CP	IX60RD	—	—	278E	75	138	M68x1,5


**MIRABELLI & FORNARO**

**Pinze per torni - CNC - Celoria**  
**Collets for - CNC - lathes Celoria**

**TIPO P**

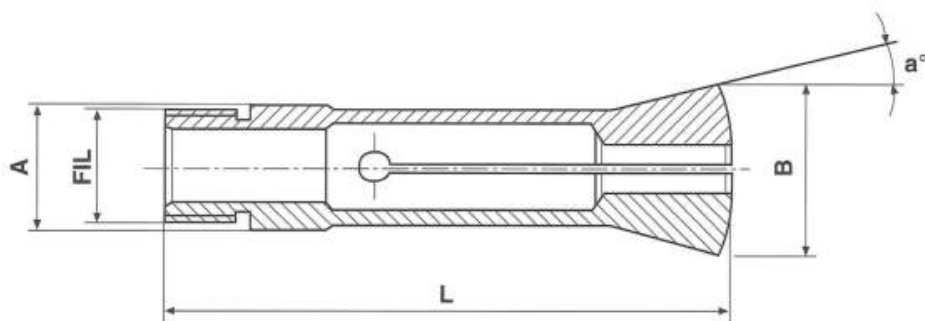


Fig. 1

Serie	Art.	Disegno	A	B	L	a°	Filetto	Fig.
PC	P1300	TST-27/01	20	28	88	15°	M18x1	1
PC	P1301	106-3931	22	28	150	10°	M20x1,5	1
PC	P1302	MDR-08/01	25	34,5	88,3	16°	M23x1DX	1
PC	P1303	MDR-08/02	25	34,5	88,3	16°	M23x1SX	1
PC	P1304	TST-38/06A	28	35	135	10°	M28x1,5	2
PC	P1305	TST-13/04	28	35	135	10°	M28x1,5	2
PC	P1306	TST-13/04A	28	35	135	10°	M28x1,5	2
PC	P1307	1060129	28,575	38	108	15°	W25,4X16FPP	1
PC	P1308	TST-14/03	32	43	120	15°	M30x1,5	2
PC	P1309	TST-14/03B	32	43	120	15°	M30x1,5	2
PC	P1310	TST-35/04	43	52	160	10°	M42x1,5	2

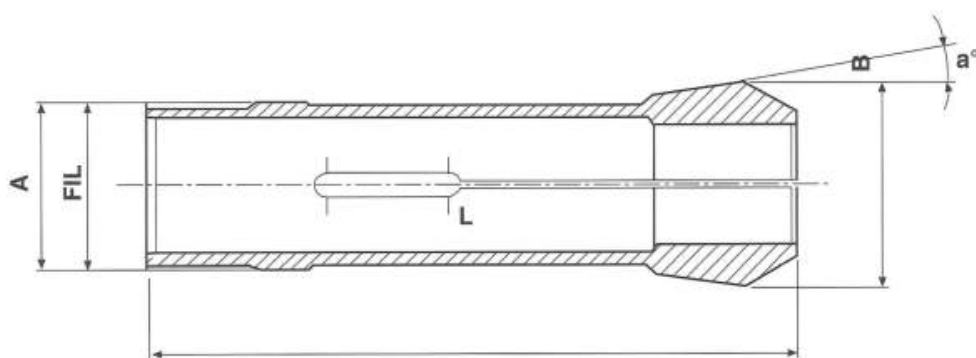
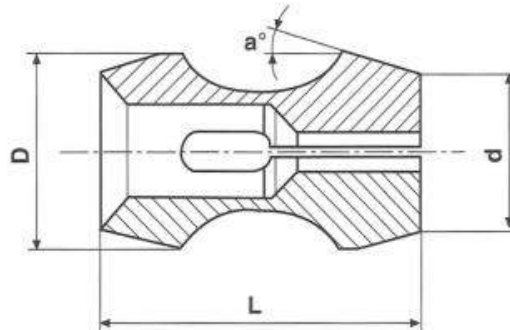


Fig. 2



**MIRABELLI & FORNARO**

**Pinza doppio cono**  
**Double cone collet**



Serie	Art.	Disegno	D	d	L	a°
PC	P1311	1.05.0085	37,34	30	60	17°

**Pinza per settori**  
**Collet for inserts**

**Settori**  
**Inserts**

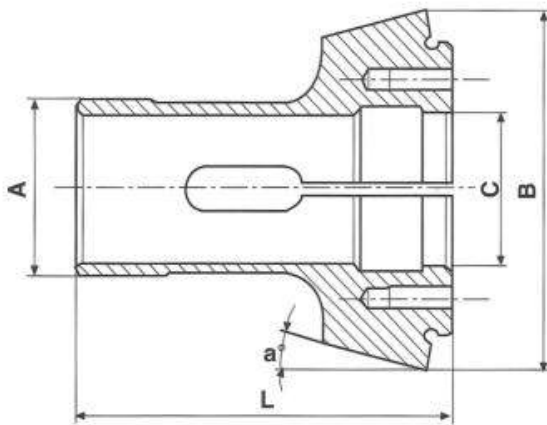


Fig. 1

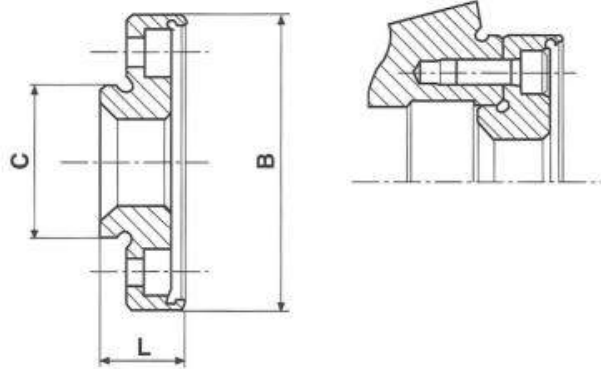


Fig. 2

Serie	Art.	Disegno	Fig.	A	B	C	L	a°
PC	P1312	0082-A1	1	40	82	35	90	15°
PC	P1313	0082-A3	2	35	67	35	20	—



**MIRABELLI & FORNARO**

## Pinza integrale Integral collet

Fig. 1

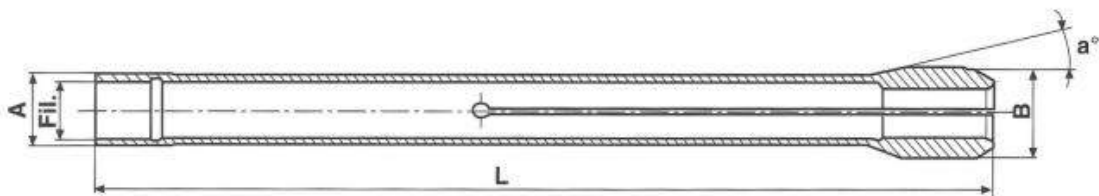
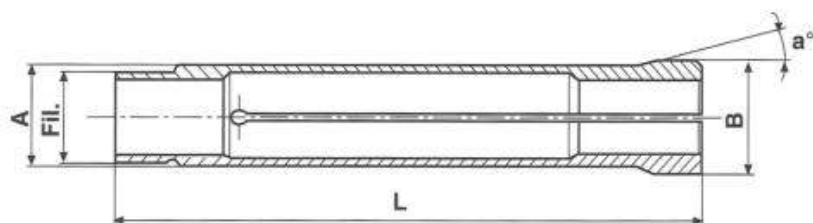


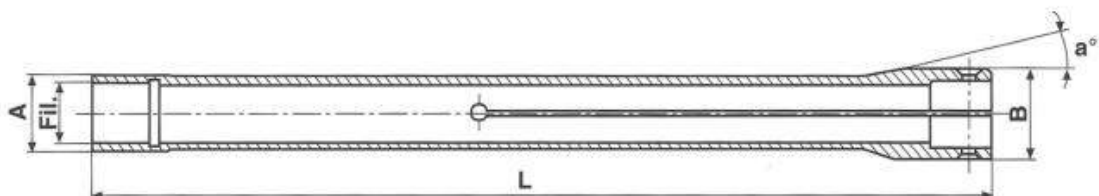
Fig. 2



Serie	Art.	Disegno	A	B	L	a°	Filetto	Fig.
PC	P1314	CQ-04/05/13A	20	25	290	15°	M17x1	1
PC	P1315	CQ-07/02/09	25	30	290	15°	M21x1,25	1
PC	P1316	CQ-04/05/21	34,6	38	190	15°	M31,5x1	2

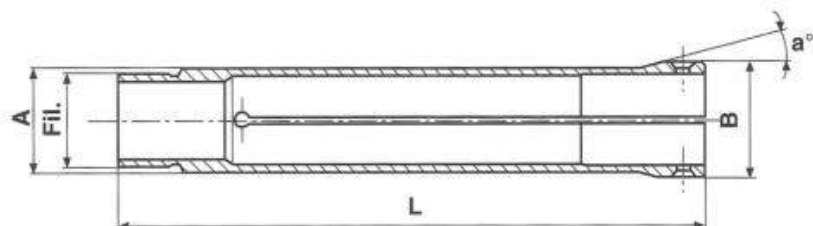
## Pinza porta settori Collet for insert

Fig. 1



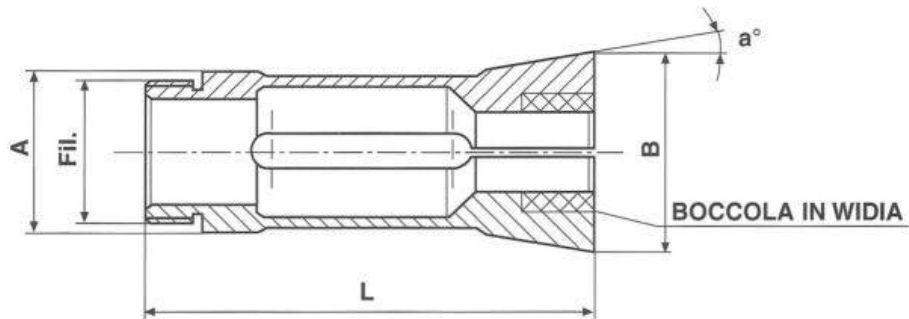
Serie	Art.	Disegno	A	B	L	a°	Filetto	Fig.
PC	P1317	CQ-04/05/13	20	25	277	15°	M17x1	1
PC	P1318	CQ-07/02/08	25	30	277	15°	M21x1,25	1
PC	P1319	SCR-11/01/01	31	36	175	15°	M27x1,25	1
PC	P1320	CQ-04/05/22	34,6	38	190	15°	M31,5x1	2
PC	P1321	ACC-19/02	39	44	325	15°	M35x1,25	1

Fig. 2



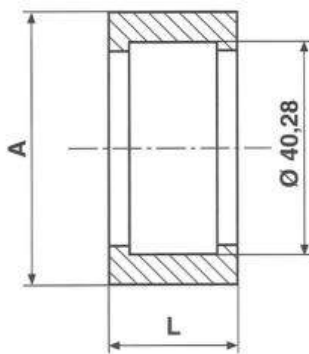
MIRABELLI & FORNARO

## Pinze con Widia Collets with Widia



Serie	Art.	Disegno	A	B	L	a°	Filletto
PC	P1322	BRA-25/04/05	32	38	100	10°	M30x1
PC	P1323	2AX-540/15/04	35	44	96	10°	M30x1
PC	P1324	BRA-25/07/06	35	44	96	10°	M30x1 SX
PC	P1325	BRA-32/07	42	49	99	10°	M38x1 SX
PC	P1326	2AX-540/14/10	50	55,3	92	10°	M45x1
PC	P1327	2.04.0008/D	52	58	90	10°	M48x1

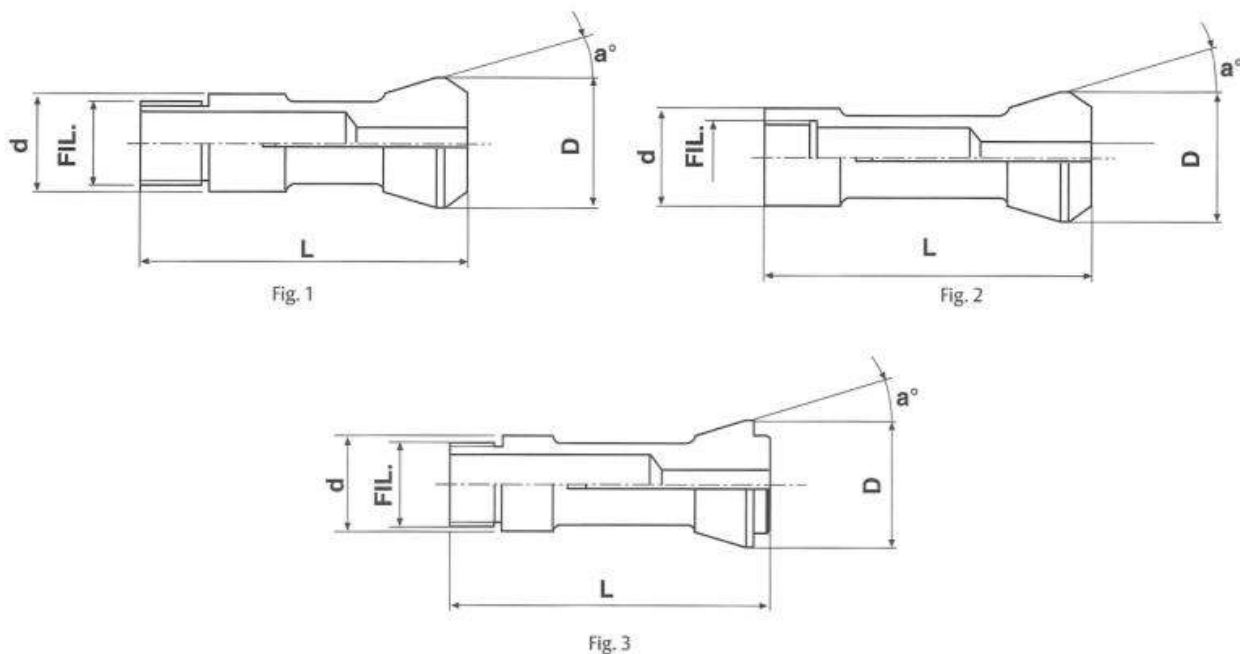
## Rullo in Widia Roller Widia



Serie	Art.	Disegno	A	L
PC	P1328	TUR-02/03/30	52	24

## Pinze per torni plurimandrini Collets for multispindle automatics

### TIPO Q



### ACME-GRIDLEY

Tipo	Fig.	Nr. Einheits	d	D	L	a°	Filletto
7/16" BRA 6	3	—	23,77	29,36	78,6	15°45'	UN 20,64x32 SX
9/16" R 6	3	—	29,3	35,4	105,5	15°	USF 25,4x20 SX
7/8" R4-R 6	3	—	38,07	46,43	130,17	15°	USF 34,92x20 SX
1" BRA 6	2	9038	44,39	54,3	139,7	12°35'	USF 39,68x18 SX
1 1/4" BRA 6	2	9067	52,32	64,7	152	15°	USF 46x20 SX
1 5/8" BRT 6	2	—	63,5	73,4	158,75	12°35'	USF 55,5x16 SX
2" BRT 6	2	—	71,44	86	177,8	12°35'	BSW 65x18 SX
2" R 4	2	9141	76,8	95,5	177,8	15°	USF 68,25x16 SX
2 1/4" R 4	2	—	76,8	95,5	174,6	15°	USF 71,42x18 SX
2 5/8" RB 6	3	—	92,07	111,12	165,1	15°	USF 85,72x18
3 1/2" RB 6	2	—	114	146,05	196,85	15°	USF 106,35x18 SX



MIRABELLI & FORNARO

### GILDEMEISTER

Tipo	Fig.	Nr. Einheits	d	D	L	a°	Filetto
AS 12	2	9013 E	26,8	34	83,5	15°	M24x1 SX
AS 16/20 GS 20	1	9012 E	34	42	85	16°	M30x1SX
AS 22	2	9044 E	45	59,5	159	15°	M40x1,5 SX
AS 25	2	9045 E	45	60,4	159	15°	M40x1 SX
AS 32	2	9069 E	53	69	129	15°	M48x1,5 SX
GS 35	2	9081 E	56	72	131	15°	M52x1,5 SX
AS 48	2	9132 E	70	90	150	15°	M65x1,5 SX
GS 50	2	9151 E	75	93,4	155	15°	M68x1,5 SX
AS 67	2	9178 E	90	115	171	15°	M85x1,5 SX
AS82	2	9209 E	109	138,4	190	15°	M102x1,5 SX
AS 100	2	9239 E	128	160,4	270	15°	M122x1,5 SX

### INDEX-STEINHÄUSER

Tipo	Fig.	Nr. Einheits	d	D	L	a°	Filetto
KS/MS 16	1	9007 E	32	41,5	84	15°	M28x1 SX
KS 20/22	1	9033 E	40	55,2	102	15°	M35x1,5 SX
KS/MS 25	1	9039 E	46	60,3	120	15°	M40x1,5 SV
KS 32	1	9070 E	53	69,3	128	15°	M47x1,5 SX
MS35	2	9081 E	56	72,4	131	15°	M52x1,5 SX
KS 42	1	9108 E	62	82,4	180	15°	M58x1,5 SX
KS 50	1	9133 E	70	92	156	15°	M65x2,0 SX
MS50	2	9151 E	75	97,4	165	15°	M68x1,5 SX

### PITTLER

Tipo	Fig.	Nr. Einheits	d	D	L	a°	Filetto
PRC 25	1	9038 E	44,3	56	139,5	15°	19/16"x18 S
PRB-PRC 32	1	9067 E	52,24	64,7	152	15°	1 13/16"x20 S
PRC 36	1	9078 E	56,92	69,7	152	15°	2"x20 S
PRB-PRC 50	1	9141 E	76,8	95,5	180	15°	2 11/16"x16 S
PRC 72	1	9206 E	106	127,7	225	15°	3 13/16"x18 S
PRC 100	1	9236 E	136,5	167,7	224	15°	5 1/8"x18 S
PRC 120	1	9240 E	153,8	180	240	15°	M148x1,5 S





### SCHÜTTE

Tipo	Fig.	Nr. Einheits	d	D	L	a°	Filetto
SF 12/13	1	9015 E	25	36,1	68	15°	M22x1 SX
SB 16	1	9006 E	30	40,5	80	15°	M26x1 SX
SE 16	1	9007 E	32	41,4	84	15°	M28x1 SX
SF 18	1	9016 E	32	41,5	80,1	15°	M30x1 SX
SF 20	1	9033 E	40	55,2	102	15°	M35x1,5 SX
SD/SE 25	1	9039 E	46	60,3	120	15°	M40x1,5 SX
SF 26	1	9070 E	53	69,3	128	15°	M47x1,5 SX
SD 32	1	9071 E	53	69,3	136	15°	M47x1,5 SX
VB 35	1	9071 E	53	69,3	136	15°	M47x1,5 SX
AD/SF 40	1	9112 E	62,9	78,3	157	15°	M56x1,5 SX
SF 42	1	9133 E	76	92	156	15°	M65x2 SX
VB 50	1	9133 E	76	92	156	15°	M65x2 SX
SD 50	1	9139 E	75	97,8	187	15°	M68x1,5 SX
SF 51	1	9139 E	75	97,8	187	15°	M68x1,5 SX
SD/SF 63	1	9179 E	90	115,3	200	15°	M82x1,5 SX
SF 67	2	9187 E	89,9	115,3	174	15°	M85x1,5 SX
SD 80/SF 81	1	9210 E	109	138,3	241	15°	M100x1,5 SX

### TORNOS

Tipo	Fig.	Nr. Einheits	d	D	L	a°	Filetto
AS/BS 14	2	9001 E	25	35	75	16°	M22x1
AS 16	1	9021 E	25	35	92	16°	M25x1
BS 20/22	1	9018 E	35	45	105,5	15°	M33x1
BS 22/8	2	9018 E	36	45	107	15° 30'	M31x1

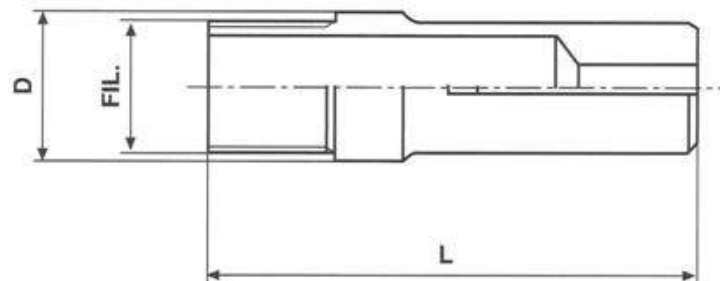
### WICKMANN

Tipo	Fig.	Nr. Einheits	d	D	L	a°	Filetto
5/8"-6 SP	2	9014 E	29,4	38,1	92,2	15°	26,21x24 FIL* SIN.
7/8"-5 SP	2	9040 E	45,94	55,7	111	15°	42,9x22 FIL*
1"-6/8 SP	2	9034 E	41,3	54,5	131,7	15°	37,74x24 FIL* SIN.
1 3/8"-5/6 SP	2	9072 E	55,47	66,8	117,5	15°	50,92x22 FIL* SIN.
1 3/4"-5/6 SP	2	9111 E	64,2	78,7	127	15°	60,3x16 FIL*
2"-2 1/4"/6 SP	2	9142 E	76,86	95,5	181	15°	72,46x22 S FIL* SIN.
2 1/4"-5SP	2	—	77,72	89,02	152,4	15°	73,02x16 FIL*
2 5/8"-6 SP	2	9181 E	92,07	111,15	165,1	15°	85,9x18 FIL*
3 1/4"-6 SP	2	—	106,3	127,1	196,8	15°	100,8x16 FIL*
3 1/2"-4 SP	2	9212 E	110,9	135	165	15°	106,53x18 FIL*



## Contropinze per torni plurimandrini Feed fingers for multispindle automatics

### TIPO R



### ACME-GRIDLEY

Tipo	Nr. Einheits	D	L	Filetto
7/16" BRA 6	—	16,8	73	UNF 15,08x32 SX
9/16" R 6	—	19,7	69,4	USF 17,4x32 SX
7/8" R4-R 6	—	29,4	133,4	USF 26,56x32 SX
1" BRA 6	9278	34,92	136,5	USF 31,7x20 SX
1 1/4" BRA 6	9285	39,5	168	USF 36,51x20 SX
1 5/8" BRT 6	—	52,1	152,4	USF 47,6x20 SX
2" BRT 6	—	58,74	171,45	BSW 55,46x18 SX
2" R 4	9405	63,5	186	USF 58,74x24 SX
2 1/4" R 4	—	68,5	177,8	USF 63,5x18 SX
2 5/8" RB 6	—	76,2	177,8	USF 73,02x24 SX
3 1/2" RB 6	—	99,3	258,7	USF 95,22x18 SX

### GILDEMEISTER

Tipo	Nr. Einheits	D	L	Filetto
AS 12	9259 E	19,5	82	M17x1
AS 16/20-GS 20	9258 E	25	90	M24x1
AS 22	9286 E	32	140	M28x1,5 SX
AS 25	9287 E	33	140	M30x1,5 SX
AS 32-AV 32	9316 E	40	136	M38x1,5 SX
GS 35	9333 E	44	136	M42x1,5 SX
AR-AS 48-AV-AA	9368 E	57	160	M54x1,5 SX
GS 50	9401 E	60	160	M57x1,5 SX
AS 67	9447 E	77,5	170	M74x1,5 SX
AS 82-AV 82	9475 E	94	180	M88x1,5 SX
AS 100	9483 E	114	235	M108x1,5 SX

### INDEX-STEINHÄUSER

Tipo	Nr. Einheits	D	L	Filetto
MS 16	9255 E	25	88	M23x1
KS 20/22	9273 E	30,8	102	M28x1,5 R o SX
KS/MS 25	9282 E	35/37	118	M33x1,5
KS 32	9319 E	43	130	M38x1,5
MS 35	9333 E	45	136	M42x1,5 SX
KS 42	9364 E	54	170	M50x1,5
KS 50	9402 E	60	156	M57x2 SX
MS 50	9401 E	60	160	M57x1,5 SX

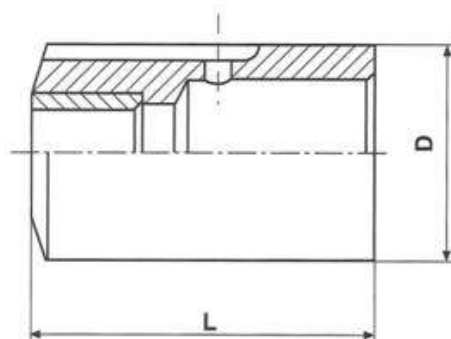


MIRABELLI & FORNARO

## Bussole fisse in metallo duro Guide bushings with solid carbide

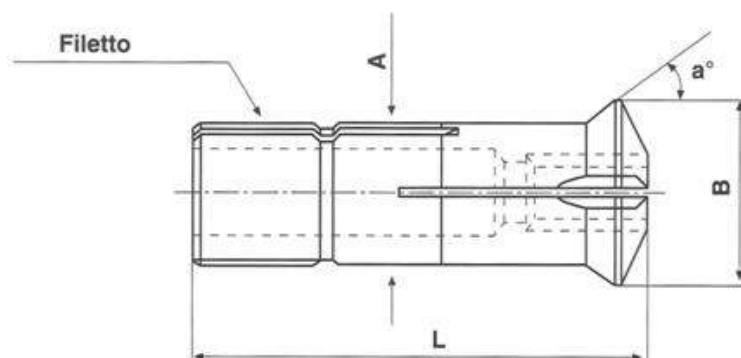
### TIPO S

Serie	Art.	D	L
BF	S 1400	10	15
BF	S 1401	13	30
BF	15D	15	30
BF	16D	16	30
BF	20D	20	30
BF	S 1402	22	32
BF	S 1403	25	35
BF	32D	32	45
BF	S 1404	40	45



## Bussole registrabili tirate in metallo duro Adjustable drawback guide bushings with solid carbide

### TIPO T



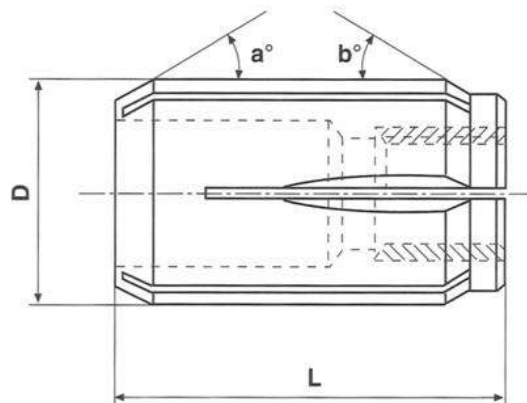
Serie	Art.	A	L	B	a°	Filetto
BR	1252	12	52	15	30°	M12x1
BR	1660	16	59	20,5	16°	M14x1
BR	1860	18	60	21,8	30°	M16x1
BR	2057	20	57	25	30°	M20x1
BR	T1500	21	57,5	24	12°	M18x1
BR	2268	22	68	29	16°	M19x1
BR	T1501	22	68	29	16°	M22x1
BR	2461	24	61	30	30°	M24x1
BR	2881	28	81	38	30°	M25x1
BR	T1501	28	82	34	16°	M25x1
BR	T1502	32	71	40	30°	M32x1
BR	3487.5	34	87,5	41	10°	M34x1
BR	4070	40	71	48	30°	M40x1
BR	T1503	42	82	49	16°	M40x1
BR	T1504	48	81	56	30°	M48x1,25



MIRABELLI & FORNARO

## Bussole registrabili spinte in metallo duro Guide bushings with solid carbide

### TIPO U

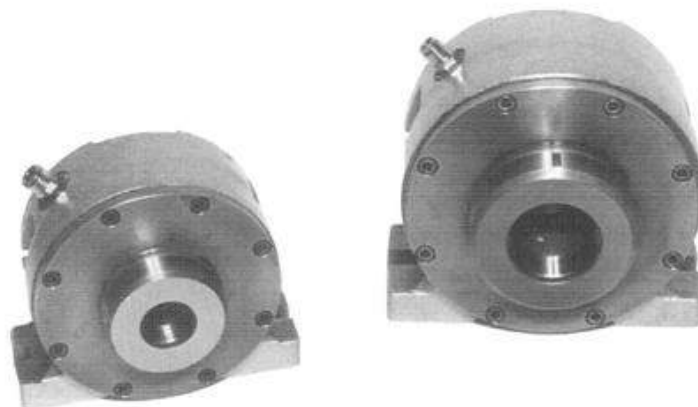


Serie	Art.	D	L	a°	b°
BR	1640	16	40	30°	30°
BR	2040	20	40	30°	30°
BR	U 1600	30	60	29°	29°
BR	U 1601	34	60	29°	29°
BR	U 1602	42	72	29°	29°
BR	U 1603	48	72	29°	29°



MIRABELLI & FORNARO

## Apparecchi pneumatici chiudipinza Pneumatic collet chucks

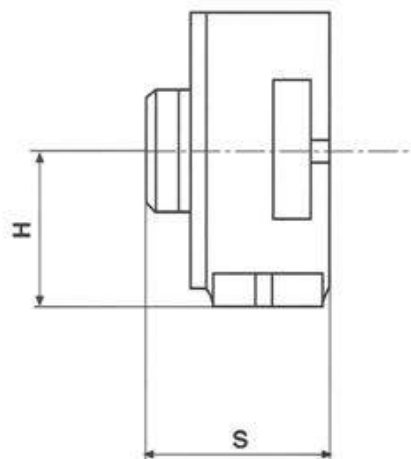
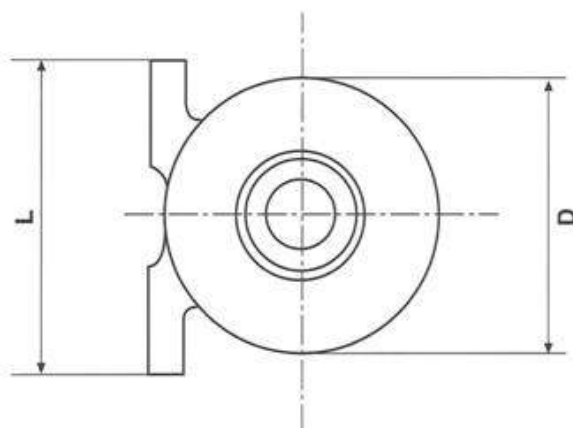


Per chiusura pezzi  $\phi$  magg. di m/m 60 a richiesta.  
Over 60 mm dia against customer specification

### Misure d'ingombro Outer chucks dimensions



Serie	Art.	Preso max	L	D	H	S	kg a 5 Atm	Kg a 7 Atm	Serie	Pinza/Collet
CH	2005/1	$\phi$ 12,5	132	105	54	86	250	350	PZ	ST125-120E
CH	2005/2	$\phi$ 18,0	152	130	67	90	410	570	PZ	TR15-140E
CH	2005/6	$\phi$ 22,0	152	130	67	90	410	570	PZ	TR20-148E
CH	2005/3	$\phi$ 27,0	170	152	77	96	600	840	PZ	TR25-161E
CH	2005/4	$\phi$ 42,0	180	165	85	117	700	980	PZ	TR42-173E
CH	2005/5	$\phi$ 60,0	—	216	—	133	1250	1750	PZ	TR60-185E



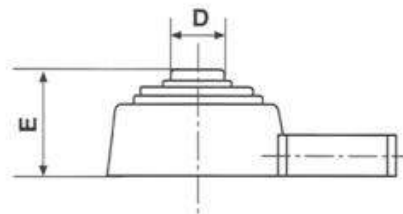
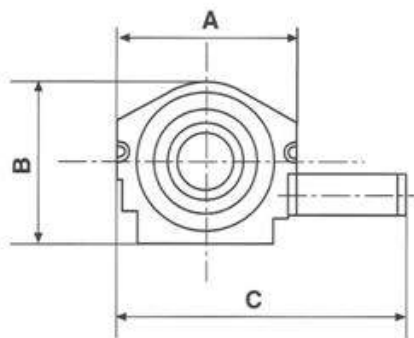
MIRABELLI & FORNARO

## Divisori pneumatici chiudipinza Pneumatic indexing fixtures collet chucks

**Art. 2500/1**



**Art. 2500/2**



### Misure d'ingombro Outer chucks dimensions



Serie	Art.	Preso max	A	B	C	D	E	Serie	Pinza/Collet
DP	2500/1	Ø 18	198	160	290	55	108	PZ	TR15-140E
DP	2500/2	Ø 42	260	230	420	80	150	PZ	TR42-173E

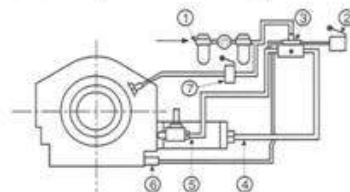
Possibilità di 3 - 4 - 6 - 8 - 12 - 24 divisioni (altre divisioni a richiesta).  
 Range = 3 - 4 - 6 - 8 - 12 - 24 indexing (other upon customer specification).  
 Comando manuale e automatico per essere inserito in ciclo con la macchina operatrice.  
 Manual or automatic for direct cyclic with operating machine Manual or Micro.

#### Schema di montaggio in ciclo con la macchina operatrice

- 1) alimentazione
- 2) pulsante o micro inizio ciclo
- 3) Cassetto distribuzione per funzionamento manuale solo a depressione per funzionamento automatico 1/2 elettrico e 1/2 a depressione
- 4) alimentazione rotazione
- 5) Alimentazione caricamento
- 6) alimentazione inversione ciclo
- 7) valvola (normalmente chiusa) a 3 vie per chiusura pinza

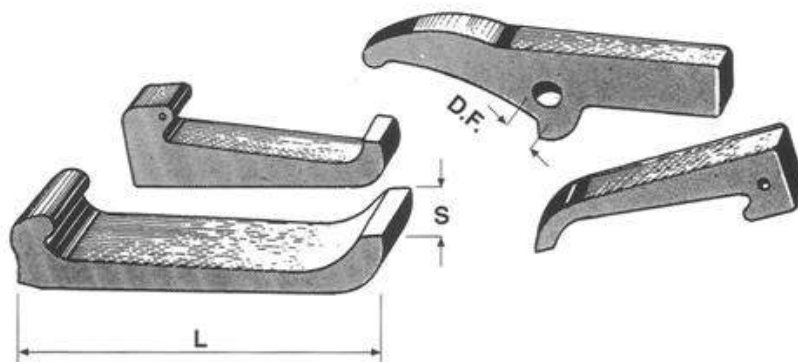
#### Pneumatic connection for use in cycle with operating machine:

- 1) Inlet air
- 2) push button or microswitch for starting cycle
- 3) distribution valve manual operation with depression only automatic operation: 1/2 electric and 1/2 with depression
- 4) rotation feeding
- 5) loading feeding
- 6) cycle inversion feeding
- 7) collet locking 3 way valve (normally closed)



**MIRABELLI & FORNARO**

## Martelletti/Levette per chiusura pinze Chuck levers

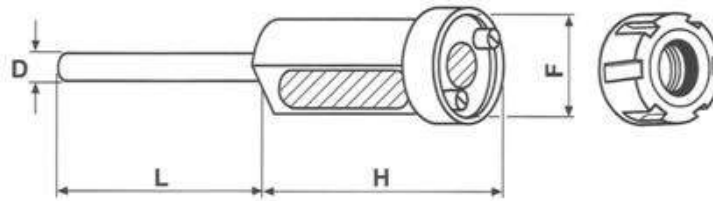


Serie	Art.	Macchina	S	L	DF
LE	BE7	BECHLER 7/10 - PETERMANN 7	6	54	4
LE	CG7	CANAVESE CG 7/30/40	15,5	106	2
LE	CA 26	CASER TA 26/30	9,5	70	2
LE	CA 42	CASER 42	12	92	—
LE	CA 4550	CASER T.A. 45/50	14,5	92,5	—
LE	FE10	FEINLER 10/15	7	50	6
LE	AS16	GILOEMEISTER AS 16/20	9	67	2,5
LE	GIO32	GIORGI 25/30/32	10	74	6
LE	IX12	INDEX 12	11,5	74	—
LE	IXON12	INDEX OM 12/DG 12	11,5	66	1,5
LE	IX18	INDEX 18/C19/25/ER25	13,5	74	—
LE	IX24	INDEX 24/29/B30 - TAREX L32/42/52	15,5	100	—
LE	IX29	INDEX 24/29	15,5	100	—
LE	IX36	INDEX 36/B42/52/B60	20	100	—
LE	ITS26TN	ITS 26 TIPO NUOVO	10	72	6
LE	ITS26TV	ITS26TV	10	71	2
LE	LO42	LOGOS 30/42	15,5	100	—
LE	MA18	MANURMIN 18/22	12	71	7
LE	MA42	MANURMIN 36/42	15,5	91,5	10
LE	P7R	PETERMANN 7R	7	69	4
LE	SA26	SAIC. B26	10	71	2
LE	SA30	SAIC. A30	14,5	73	6
LE	SA45	SAIC. B45	14,5	81,5	2
LE	SK40	SKODA 40	20	103	2
LE	ST004	STROHM 4,5	6	44	4,5
LE	ST125	STRHOM 105/125	7	50	6
LE	ST20TN	STRHOM 205/255	14	92,5	8
LE	ST20TV	STRHOM 205 VECCHIO	12	90	9
LE	TA64	TAREXH64 E MINI TAR 42	21	100,5	—
LE	TB4260	TRAUB TB 30/42/60 - TK 42	18	86	—
LE	TC1525	TRAUB TC 15/25	12	70	2
LE	TD26	TRAUB TD 16/26/36 TG 42	12	74	2
LE	TR1525	TRAUB A15/25	10	70	2
LE	TR15TV	TRAUB A15/20	9	61	—
LE	TR4260	TRAUB A 36/42/60	14	71	2
LE	UN 42	UNIMAT 42/60	12	69	8
LE	WG10	WIRTH&GRUFFAT 10/12	7	67,5	4



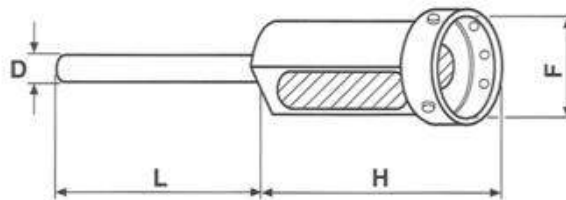
MIRABELLI & FORNARO

**Fissaggio frontale con ghiera**  
**Front fixing with nut**



Serie	Art.	D	F	H	L
PF	D12CC	8	12	40	40
PF	D16CC	8	16	45	45
PF	D20CC	8	20	50	50
PF	D25CC	10	25	55	55
PF	D30CC	12	30	55	55
PF	D35CC	10	35	58	55
PF	D38CC	12	38	60	55

**Fissaggio laterale**  
**Lateral fixing**

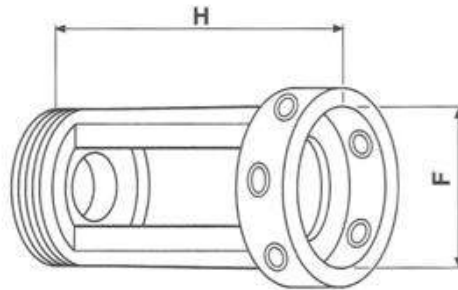


Serie	Art.	D	F	H	L
PF	1700	8	16	40	40
PF	1701	8	20	43	45
PF	1702	8	25	50	45
PF	1703	8	30	50	45
PF	1704	8	38	60	50





**Portafiliera  
Threading die holders**



**TRAUB A. 15-20-25**

Serie	Art.	F	H	Filetto
PF	TR25C16		27	
PF	TR25M16	16	45	M 25x1,5 SX
PF	TR25L16		67	
PF	TR25C20		32	
PF	TR25M20	20	45	M 25x1,5 SX
PF	TR25L20		67	
PF	TR25C25		32	
PF	TR25M25	25	45	M 25x1,5 SX
PF	TR25L25		67	
PF	TR25C30		32	
PF	TR25M30	30	45	M 25x1,5 SX
PF	TR25L30		67	
PF	TR25C38		32	
PF	TR25M38	38	45	M 25x1,5 SX
PF	TR25L38		67	

**SAIC B. 26-ITS 26**

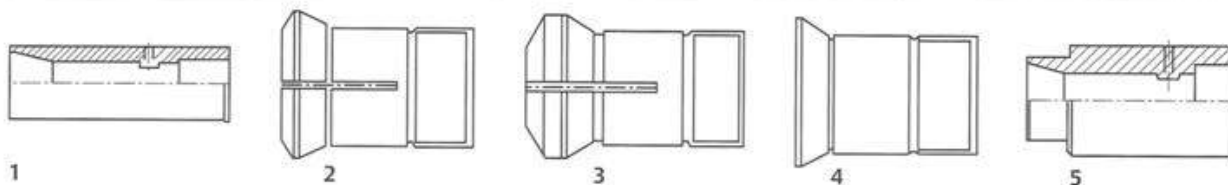
Serie	Art.	F	H	Filetto
PF	SAC16		27	
PF	SAM16	16	45	M 26x1,5 SX
PF	SAL16		67	
PF	SAC20		32	
PF	SAM20	20	45	M 26x1,5 SX
PF	SAL20		67	
PF	SAC25		32	
PF	SAM25	25	45	M 26x1,5 SX
PF	SAL25		67	
PF	SAC30		32	
PF	SAM30	30	45	M 26x1,5 SX
PF	SAL30		67	
PF	SAC38		32	
PF	SAM38	38	45	M 26x1,5 SX
PF	SAL38		67	



**MIRABELLI & FORNARO**

## Astucci portaboccole Guide bushing sleeves

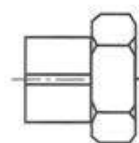
Per bussole registrabili - For adjustable bushings  
Per bussole fisse - For guide bushings



Serie	Art.	Nr. disegno	Dimensioni	Descrizione	Description
AP	C15	1	Ø 15x40	PER BUSSOLE REGISTRABILI Ø 12x50	FOR ADJUSTABLE BUSHINGS Ø 12x50
AP	C16	1	Ø 16x40	PER BUSSOLE REGISTRABILI Ø 12x52	FOR ADJUSTABLE BUSHINGS Ø 12x52
AP	F15	2	Ø 24x46	PER BUSSOLE FISSE Ø 15x30	FOR GUIDE BUSHINGS Ø 15x30
AP	F16	2	Ø 24x46	PER BUSSOLE FISSE Ø 16x30	FOR GUIDE BUSHINGS Ø 16x30
AP	F18	2	Ø 24x46	PER BUSSOLE FISSE Ø 18x30	FOR GUIDE BUSHINGS Ø 18x30
AP	F20	2	Ø 24x46	PER BUSSOLE FISSE Ø 20x30	FOR GUIDE BUSHINGS Ø 20x30
AP	F32	2	Ø 48x61	PER BUSSOLE FISSE Ø 32x45	FOR GUIDE BUSHINGS Ø 32x45
AP	FT16	3	Ø 28x45	PER BUSSOLE FISSE Ø 16x30	FOR GUIDE BUSHINGS Ø 16x30
AP	FT20	3	Ø 28x45	PER BUSSOLE FISSE Ø 20x30	FOR GUIDE BUSHINGS Ø 20x30
AP	R12	4	Ø 17x44	PER BUSSOLE REGISTRABILI Ø 12x52	FOR ADJUSTABLE BUSHINGS Ø 12x52
AP	R18	4	Ø 24x46	PER BUSSOLE REGISTRABILI Ø 18x60	FOR ADJUSTABLE BUSHINGS Ø 18x60
AP	R20	4	Ø 24x46	PER BUSSOLE REGISTRABILI Ø 20x57	FOR ADJUSTABLE BUSHINGS Ø 20x57
AP	R20ST205	4	Ø 48x60	PER BUSSOLE REGISTRABILI Ø 20x57	FOR ADJUSTABLE BUSHINGS Ø 20x57
AP	R40BE20	5	Ø 56x52	PER BUSSOLE REGISTRABILI Ø 40x70	FOR ADJUSTABLE BUSHINGS Ø 40x70
AP	R40ST20	4	Ø 48x60	PER BUSSOLE REGISTRABILI Ø 40x70	FOR ADJUSTABLE BUSHINGS Ø 40x70
AP	RBE10	5	Ø 34x46	PER BUSSOLE REGISTRABILI Ø 20x57	FOR ADJUSTABLE BUSHINGS Ø 20x57
AP	RT20	4	Ø 20x45	PER BUSSOLE REGISTRABILI Ø 20x57	FOR ADJUSTABLE BUSHINGS Ø 20x57

## Dadi per bussole registrabili Nuts for drawn type guide bushing

Serie	Art.	Descrizione	Description
DA	1252	PER BUSSOLE Ø 12x52	FOR GUIDE BUSHINGS Ø 12x52
DA	1860	PER BUSSOLE Ø 18x60	FOR GUIDE BUSHINGS Ø 18x60
DA	2057	PER BUSSOLE Ø 20x57	FOR GUIDE BUSHINGS Ø 20x57



## Ghiere filettate Lock nuts

Serie	Art.	Descrizione	Description
GH	24	PER ASTUCCI E BUSSOLE REGISTRABILI Ø 24x61	FOR SLEEVES AND ADJUSTABLE BUSHINGS Ø 24x61
GH	4070	PER BUSSOLE REGISTRABILI Ø 40x70	FOR ADJUSTABLE BUSHINGS Ø 40x70
GH	48	PER ASTUCCI PORTABUSOLE STROHM 205/255	FOR SLEEVES GUIDE BUSH STROHM205/255



MIRABELLI & FORNARO

## Ricambi e accessori Strohm 125

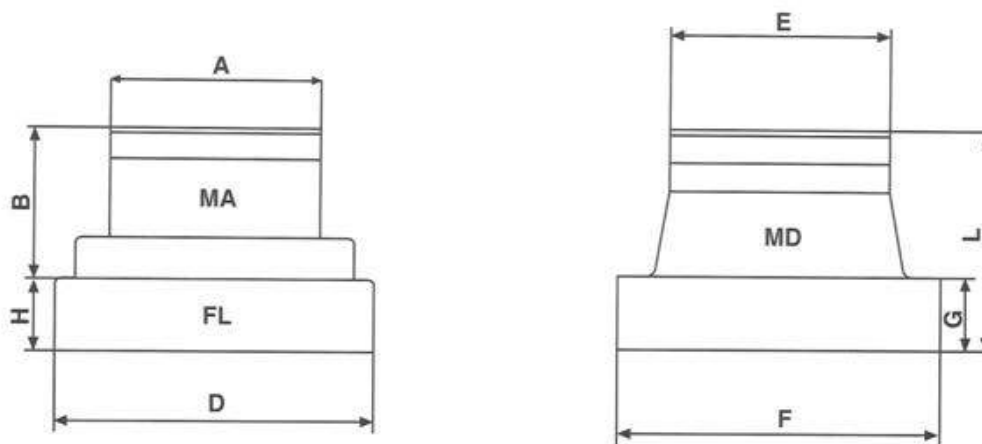
### Spare part Strohm 125

Serie	Art.	Descrizione	Description
MA	FI125	MANDRINO FILETTARE	THREAD SPINDLE
MA	FO125	MANDRINO FORARE	DRILL SPINDLE
MA	PP	MANDRINO PROLUNGA PORTAPUNTE	EXTENSION SPINDLE TOLL-HOLDER
MA	PPM	MANDRINO PROLUNGA PORTAMASCHIO	EXTENSION SPINDLE FOR-TAP
BZ	BZC	BRONZINA Ø 18x24	BEARING Ø 18x24
BZ	BZM	BRONZINA Ø 18x50	BEARING Ø 18x50
BZ	BZL	BRONZINA Ø 21,5/18x70	BEARING Ø 21,5/18x70
CO	7	CONO PORTAFILIERA Ø 7	DIE HOLDER CONE Ø 7
CO	8	CONO PORTAFILIERA Ø 8	DIE HOLDER CONE Ø 8
DS	ST10H10	DISTANZIALE Ø 16,8 - F 13 H 10	DISTANCE RING Ø 16,8 - F 13 H 10
DS	ST10H12	DISTANZIALE Ø 16,8 - F 13 H 12	DISTANCE RING Ø 16,8 - F 13 H 12
DS	ST10H75	DISTANZIALE Ø 16,8 - F 13 H 75	DISTANCE RING Ø 16,8 - F 13 H 75
CA	MF125	CAPPUCCI PER MANDRINI	NUT FOR SPINDLE
CA	PP125	CAPPUCCI PORTAPUNTE E PORTAMASCHI	NUT FOR TOOL-HOLDER/FOR TAP
TC	FO125	TASSELLI CAM-FORARE M 6	INSERT CAMMES DRILL M6
TC	RA 125	TASSELLI CAM-RADIALI M 6	INSERT CAMMES RADIAL M6



MIRABELLI & FORNARO

**Mandrini portapinza per torni CNC**  
*Collet chucks CNC lathes*



**Mandrino portapinza (TRAUB 42-INDEX 36)**  
**Collet chuck (TRAUB 42-INDEX 36)**

Serie	Art.	A	B
MA	PTR42	106	77

**Flangia**  
**Flange**

Serie	Art.	D	H
AT	ASA5	135	37
AT	ASA6	160	38
AT	ASA8	205	39

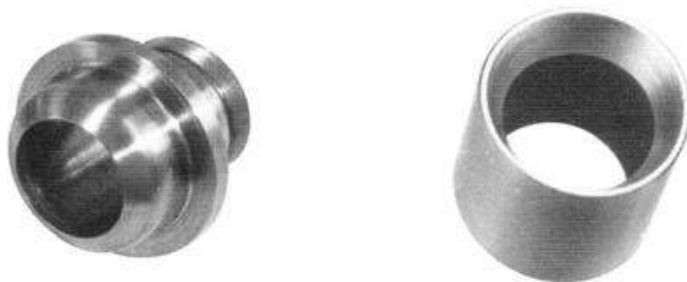
**Mandrino per pinze doppio cono (TRAUB 45 DC-CASER 50 DC)**  
**Chuck for double cone collets (TRAUB 45 DC-CASER 50 DC)**

Serie	Art.	ASA	E	F	G	H
MD	PTR45DC6	6	110	160	38	115
MD	PTR45DC8	8	110	205	39	116
MD	PCA50DC6	6	110	160	38	115
MD	PCA50DC8	8	110	205	39	116



**MIRABELLI & FORNARO**

Bicchieri portapinze • Collet sleeves • • • Cuffie • Chuck nuts  
Manicotti chiudipinza • Collet sleeves for double



MIRABELLI & FORNARO